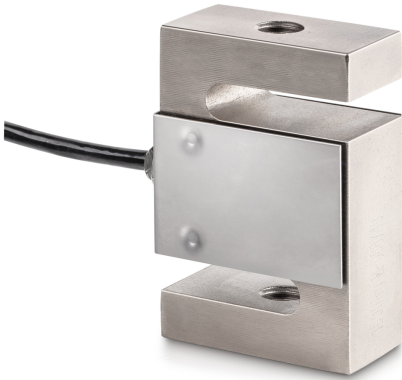


# KERN CS 20000-3P1

**KERN**

4-wire "S" measuring cell made of nickel-plated steel for force and mass measurement



Load cell - Output resistance - variance	2 $\Omega$
Measuring range force [Max] (N)	200 kN
Directions of force	tension compression

Approval	
CE mark	✓

Construction	
Design	"S" shaped cell
Dimension (W×D×H)	160×200×60 mm
Material	steel, nickel-plated
Cable length	6 m
Mounting - force application	Threaded hole M42 × 3
Mounting - force dissipation	Threaded hole M42 × 3

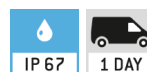
Functions	
IP protection - complete device	IP67

Environmental conditions	
Use temperature [Min]	-10 °C
Use temperature [Max]	40 °C
Ambient temperature [Min]	-35 °C
Ambient temperature [Max]	65 °C
Storage temperature [Min]	-40 °C
Storage temperature [Max]	70 °C

Packing & Shipping	
Readability force [d] (N)	113 d
Dimensions packaging (W×D×H)	320×320×160 mm
Net weight	11,88 kg
Shipping method	Parcel service
Net weight approx.	12 kg
Gross weight approx.	14 kg
Shipping weight	13,43 kg

## Pictograms

## STANDARD



## Category

Brand	Sauter
Product category	Measuring cell
Product group	Load/force measuring cell
Product family	CS P1

## Measuring System

Weighing capacity [Max]	20000 kg
Load cell connection	4-wire
Load cell OIML class	C3
Load cell - Resolution (verifiable)	3000 e
Load cell - characteristic value - nominal	2 mV/V
Load cell - characteristic value - variance	0,004 mV/V
Load cell - Y-value	10000
Load cell - Combined error	0,02%
Load cell - Dead load [Min] (%)	0%
Measuring applications	force mass
Load cell - Input resistance - nominal	350 $\Omega$
Load cell - Output resistance - nominal	351 $\Omega$
Load cell - Isolation resistance - [Min]	500 M $\Omega$
Load cell - Recommended excitation voltage [Min]	5 V
Load cell - Recommended excitation voltage [Max]	12 V
Load cell - Input resistance - variance	3,5 $\Omega$